

检测报告 (SVHC)

编号: SZXEC2201042510

日期: 2022年04月29日 第1页,共12页

客户名称: 扬州康虹半导体有限公司
客户地址: 江苏省扬州市邗江区方巷镇工业集中区

样品名称: Bridge Diode MOS
型号: MBS
客户参考信息: MBS MSB WOB MBF MBM ABS UMB UMSB DB/DF/DBF/DBD-1/
S KBP.TBS YBS KBS GBP GBL DKB KBL RS KBU RS2 KBJ GBJ
GBU KBPC.GBPC KBPCW GBPCW 1206 DO-35 LL-34 LL-35 R-1
DO-41 DO-15 A-405.DO-27 DO-201AD R-6 DO-214AC DO-214AA
DO-214AB DO-213AA SMA.SMB SMC SMAF SMBF SMCF MELF
MINIMELF SOD-123/323/523/723/923.SOT-23/323/523/723/923/89/
223 ITO-220AB/C TO-220AB/C.TO-252/252/263/262/3P/247/277/126

以上样品及信息由客户提供。

SGS工作编号: RP22-007692 - SZ
样品接收日期: 2022年04月14日
检测周期: 2022年04月14日 - 2022年04月21日
检测要求: 根据客户要求:
(i) 基于欧洲化学品管理署截止2021年7月8日公布的供授权审议的高关注物质候选清单(根据欧盟第1907/2006号REACH法规), 对61种无机的高关注物质(SVHC)及另外11种有机的金属高关注物质(SVHC)进行筛分检测。
检测结果: 请参见下一页

总结:

根据具体的范围和筛分检测, 所提交样品中SVHC检测结果 $\leq 0.1\%$ (w/w)。	通过
--	----



Unless otherwise agreed in writing, this document is issued by the Company subject to its General Conditions of Service printed overleaf, available on request or accessible at <http://www.sgs.com/en/Terms-and-Conditions.aspx> and, for electronic format documents, subject to Terms and Conditions for Electronic Documents at <http://www.sgs.com/en/Terms-and-Conditions/Terms-e-Documents.aspx>. Attention is drawn to the limitation of liability, indemnification and jurisdiction issues defined therein. Any holder of this document is advised that information contained hereon reflects the Company's findings at the time of its intervention only and within the limits of Client's instructions, if any. The Company's sole responsibility is to its Client and this document does not exonerate parties to a transaction from exercising all their rights and obligations under the transaction documents. This document cannot be reproduced except in full, without prior written approval of the Company. Any unauthorized alteration, forgery or falsification of the content or appearance of this document is unlawful and offenders may be prosecuted to the fullest extent of the law. Unless otherwise stated the results shown in this test report refer only to the sample(s) tested.
Attention: To check the authenticity of testing / inspection report & certificate, please contact us at telephone: (86-755) 8307 1443, or email: CN.Doccheck@sgs.com
Room 101-901, Plant 4 & Room 101, Plant 2 & Room 101, Plant 3 & Room 301-501, Plant 3, Jianghao (Bantian) Industrial Plant Area, No. 430, Jihua Road, Bantian Community, Bantian Street, Longgang District, Shenzhen, Guangdong, China 518129 www.sgs.com.cn
中国·广东·深圳市龙岗区坂田街道坂田社区吉华路430号江灏(坂田)工业厂区厂房4号101-901、2号101、3号101、3号301-501 邮编:518129 t(86-755)25328888 sgs.china@sgs.com

检测报告 (SVHC)

编号: SZXEC2201042510

日期: 2022年04月29日 第2页,共12页

通标标准技术服务有限公司深圳分公司
授权签名

石常福

Ford Shi 石常福
批准签署人

scan to see the report



C8797DC3



Unless otherwise agreed in writing, this document is issued by the Company subject to its General Conditions of Service printed overleaf, available on request or accessible at <http://www.sgs.com/en/Terms-and-Conditions.aspx> and, for electronic format documents, subject to Terms and Conditions for Electronic Documents at <http://www.sgs.com/en/Terms-and-Conditions/Terms-e-Document.aspx>. Attention is drawn to the limitation of liability, indemnification and jurisdiction issues defined therein. Any holder of this document is advised that information contained hereon reflects the Company's findings at the time of its intervention only and within the limits of Client's instructions, if any. The Company's sole responsibility is to its Client and this document does not exonerate parties to a transaction from exercising all their rights and obligations under the transaction documents. This document cannot be reproduced except in full, without prior written approval of the Company. Any unauthorized alteration, forgery or falsification of the content or appearance of this document is unlawful and offenders may be prosecuted to the fullest extent of the law. Unless otherwise stated the results shown in this test report refer only to the sample(s) tested.

Attention: To check the authenticity of testing / inspection report & certificate, please contact us at telephone: (86-755) 8307 1443, or email: CN_Doccheck@sgs.com

检测报告 (SVHC)

编号: SZXEC2201042510

日期: 2022年04月29日 第4页,共12页

(d) 设有欧洲范围内工作场所接触限值的物质。

3. 如果样品中SVHC的检测结果显示超过报告限, 建议客户进一步定量分析检测含有SVHC的组分并且得到SVHC物质的准确浓度。

检测样品:

检测样品描述:

样品 编号	SGS 样品ID	描述
SN1	SZX22-010425.010	铜色金属 10A(半成品)+铜色金属 10B(半成品)+银色金属 10C(半成 品)

检测方法:

SGS内部方法- SGS-CCL-SOP-019-21, SGS-CCL-SOP-019-22, 采用ICP-OES和UV-VIS分析。



Unless otherwise agreed in writing, this document is issued by the Company subject to its General Conditions of Service printed overleaf, available on request or accessible at <http://www.sgs.com/en/Terms-and-Conditions.aspx> and, for electronic format documents, subject to Terms and Conditions for Electronic Documents at <http://www.sgs.com/en/Terms-and-Conditions/Terms-e-Documents.aspx>. Attention is drawn to the limitation of liability, indemnification and jurisdiction issues defined therein. Any holder of this document is advised that information contained hereon reflects the Company's findings at the time of its intervention only and within the limits of Client's instructions, if any. The Company's sole responsibility is to its Client and this document does not exonerate parties to a transaction from exercising all their rights and obligations under the transaction documents. This document cannot be reproduced except in full, without prior written approval of the Company. Any unauthorized alteration, forgery or falsification of the content or appearance of this document is unlawful and offenders may be prosecuted to the fullest extent of the law. Unless otherwise stated the results shown in this test report refer only to the sample(s) tested.

Attention: To check the authenticity of testing / inspection report & certificate, please contact us at telephone: (86-755) 8307 1443, or email: CN_Doccheck@sgs.com

SGS-CSTC Standards Technical Services Co., Ltd.
Shenzhen Branch Testing Center Chemical Laboratory

Room 101-901, Plant 4 & Room 101, Plant 2 & Room 101, Plant 3 & Room 301-501, Plant 3, Jianghao (Banlian) Industrial Plant Area, No. 430, Jihua Road, Banlian Community, Banlian Street, Longgang District, Shenzhen, Guangdong, China 518129 www.sgs.com
中国·广东·深圳市龙岗区坂田街道坂田社区吉华路430号江灏(坂田)工业厂区厂房4号101-901、2号101、3号101、3号301-501 邮编:518129 t(86-755) 25328888 sgs.china@sgs.com

检测报告 (SVHC)

编号: SZXEC2201042510

日期: 2022年04月29日 第5页,共12页

检测结果: (SVHC候选清单中的高关注物质)

批次	物质名称	CAS No.	010 浓度 (%)	RL (%)
-	所有检测的候选清单中的SVHC	-	ND	-



Unless otherwise agreed in writing, this document is issued by the Company subject to its General Conditions of Service printed overleaf, available on request or accessible at <http://www.sgs.com/en/Terms-and-Conditions.aspx> and, for electronic format documents, subject to Terms and Conditions for Electronic Documents at <http://www.sgs.com/en/Terms-and-Conditions/Terms-e-Documents.aspx>. Attention is drawn to the limitation of liability, indemnification and jurisdiction issues defined therein. Any holder of this document is advised that information contained hereon reflects the Company's findings at the time of its intervention only and within the limits of Client's instructions, if any. The Company's sole responsibility is to its Client and this document does not exonerate parties to a transaction from exercising all their rights and obligations under the transaction documents. This document cannot be reproduced except in full, without prior written approval of the Company. Any unauthorized alteration, forgery or falsification of the content or appearance of this document is unlawful and offenders may be prosecuted to the fullest extent of the law. Unless otherwise stated the results shown in this test report refer only to the sample(s) tested.

Attention: To check the authenticity of testing /inspection report & certificate, please contact us at telephone: (86-755) 8307 1443, or email: CN.Doccheck@sgs.com

Room 101-901, Plant 4 & Room 101, Plant 2 & Room 101, Plant 3 & Room 301-501, Plant 3, Jianghao (Banian) Industrial Plant Area, No. 430, Jihua Road, Banian Community, Banian Street, Longgang District, Shenzhen, Guangdong, China 518129 www.sgs.com
 中国·广东·深圳市龙岗区坂田街道坂田社区吉华路430号江灏(坂田)工业厂区厂房4号101-901、2号101、3号101、3号301-501 邮编:518129 t(86-755) 25328888 sgs.china@sgs.com

检测报告 (SVHC)

编号: SZXEC2201042510

日期: 2022年04月29日 第6页,共12页

注释:

1. 上表仅显示检出的SVHC, 低于RL的SVHC没有列出。所有检测的SVHC请参见附录。
 2. RL = 报告限 (当检测结果 \geq RL时显示数据。RL不同于法规限值。)。ND = 未检出($<$ RL), ND针对SVHC物质。
 3. * 检测结果是选定的元素的结果并基于最坏的情况计算得出。详细信息请参见SGS REACH网站:
<http://www.sgs.com/en/Consumer-Goods-Retail/Toys-and-Juvenile-Products/Toys/REACH/Management-of-SVHC.aspx>
 4. RL = 0.005% 是针对元素 (例如钴、砷、铅、铬(VI)、铝、镉、硼、锑、锌、镱、钛、钡和镉), 除了钼的RL= 0.0005%, 硼的RL= 0.0025%(仅对四氟硼酸铅)。
 5. 硼化合物的结果由ICP-OES检测的水提取的硼元素结果换算得出。
 6. 基于客户要求等进行等比混合测试, 测试结果基于最小样品质量计算。
- 除非另有说明, 参照ILAC-G8:09/2019, 使用简单接受 ($w=0$) 的二元判定规则进行符合性判定。
除非另有说明, 此报告结果仅对检测的样品负责。本报告未经本公司书面许可, 不可部分复制。
检测报告仅用于客户科研、教学、内部质量控制、产品研发等目的, 仅供内部参考。



Unless otherwise agreed in writing, this document is issued by the Company subject to its General Conditions of Service printed overleaf, available on request or accessible at <http://www.sgs.com/en/Terms-and-Conditions.aspx> and, for electronic format documents, subject to Terms and Conditions for Electronic Documents at <http://www.sgs.com/en/Terms-and-Conditions/Terms-e-Documents.aspx>. Attention is drawn to the limitation of liability, indemnification and jurisdiction issues defined therein. Any holder of this document is advised that information contained hereon reflects the Company's findings at the time of its intervention only and within the limits of Client's instructions, if any. The Company's sole responsibility is to its Client and this document does not exonerate parties to a transaction from exercising all their rights and obligations under the transaction documents. This document cannot be reproduced except in full, without prior written approval of the Company. Any unauthorized alteration, forgery or falsification of the content or appearance of this document is unlawful and offenders may be prosecuted to the fullest extent of the law. Unless otherwise stated the results shown in this test report refer only to the sample(s) tested.

Attention: To check the authenticity of testing / inspection report & certificate, please contact us at telephone: (86-755) 8307 1443, or email: CN_Doccheck@sgs.com

Room 101-901, Plant 4 & Room 101, Plant 2 & Room 101, Plant 3 & Room 301-501, Plant 3, Jianghao (Banian) Industrial Plant Area, No. 430, Jihua Road, Banian Community, Banian Street, Longgang District, Shenzhen, Guangdong, China 518129 www.sgs.com
中国·广东·深圳市龙岗区坂田街道坂田社区吉华路430号江灏(坂田)工业厂区厂房4号101-901、2号101、3号101、3号301-501 邮编: 518129 t (86-755) 25328888 sgs.china@sgs.com

检测报告
(SVHC)

编号: SZXEC2201042510

日期: 2022年04月29日 第7页,共12页

附录

所有检测的SVHC:

批次	序号	物质名称	CAS No.	RL (%)
I	1	二氯化钴*	7646-79-9	0.005
I	2	五氧化二砷*	1303-28-2	0.005
I	3	三氧化二砷*	1327-53-3	0.005
I	4	砷酸氢铅*	7784-40-9	0.005
I	5	重铬酸钠*	7789-12-0, 10588-01-9	0.005
I	6	三乙基砷酸酯*	15606-95-8	0.005
II	7	钼铬红(C.I.颜料红 104)*	12656-85-8	0.005
II	8	铬酸铅*	7758-97-6	0.005
II	9	铅铬黄(C.I.颜料黄34)*	1344-37-2	0.005
III	10	重铬酸铵*	7789-09-5	0.005
III	11	硼酸*	-	0.005
III	12	无水四硼酸钠*	1303-96-4, 1330-43-4, 12179-04-3	0.005
III	13	铬酸钾*	7789-00-6	0.005
III	14	重铬酸钾*	7778-50-9	0.005
III	15	铬酸钠*	7775-11-3	0.005
III	16	水合硼酸钠*	12267-73-1	0.005
IV	17	铬酸,铬酸及重铬酸低聚物,重铬酸*	-	0.005
IV	18	三氧化铬*	1333-82-0	0.005
IV	19	碳酸钴*	513-79-1	0.005
IV	20	乙酸钴*	71-48-7	0.005



Unless otherwise agreed in writing, this document is issued by the Company subject to its General Conditions of Service printed overleaf, available on request or accessible at <http://www.sgs.com/en/Terms-and-Conditions.aspx> and, for electronic format documents, subject to Terms and Conditions for Electronic Documents at <http://www.sgs.com/en/Terms-and-Conditions/Terms-e-Documents.aspx>. Attention is drawn to the limitation of liability, indemnification and jurisdiction issues defined therein. Any holder of this document is advised that information contained hereon reflects the Company's findings at the time of its intervention only and within the limits of Client's instructions, if any. The Company's sole responsibility is to its Client and this document does not exonerate parties to a transaction from exercising all their rights and obligations under the transaction documents. This document cannot be reproduced except in full, without prior written approval of the Company. Any unauthorized alteration, forgery or falsification of the content or appearance of this document is unlawful and offenders may be prosecuted to the fullest extent of the law. Unless otherwise stated the results shown in this test report refer only to the sample(s) tested.

Attention: To check the authenticity of testing /inspection report & certificate, please contact us at telephone: (86-755) 8307 1443, or email: CN.Doccheck@sgs.com

Room 101-901, Plant 4 & Room 101, Plant 2 & Room 101, Plant 3 & Room 301-501, Plant 3, Jianghao (Banian) Industrial Plant Area, No. 430, Jihua Road, Banian Community, Banian Street, Longgang District, Shenzhen, Guangdong, China 518129 www.sgs.com
 中国·广东·深圳市龙岗区坂田街道坂田社区吉华路430号江灏(坂田)工业区厂房4号101-901、2号101、3号101、3号301-501 邮编: 518129 t(86-755) 25328888 sgs.china@sgs.com

检测报告
(SVHC)

编号: SZXEC2201042510

日期: 2022年04月29日 第8页,共12页

附录

所有检测的SVHC:

批次	序号	物质名称	CAS No.	RL (%)
IV	21	硝酸钴*	10141-05-6	0.005
IV	22	硫酸钴*	10124-43-3	0.005
V	23	铬酸锶*	7789-06-2	0.005
VI	24	硅酸铝耐火陶瓷纤维*	-	0.005
VI	25	砷酸*	7778-39-4	0.005
VI	26	砷酸钙*	7778-44-1	0.005
VI	27	铬酸铬*	24613-89-6	0.005
VI	28	叠氮化铅*	13424-46-9	0.005
VI	29	苦味酸铅*	6477-64-1	0.005
VI	30	史蒂芬酸铅*	15245-44-0	0.005
VI	31	氢氧化铬酸锌*	49663-84-5	0.005
VI	32	氢氧化铬酸锌钾*	11103-86-9	0.005
VI	33	砷酸铅*	3687-31-8	0.005
VI	34	氧化锆硅酸铝耐火陶瓷纤维*	-	0.005
VII	35	三氧化二硼*	1303-86-2	0.005
VII	36	甲基磺酸铅*	17570-76-2	0.005
VIII	37	二盐基邻苯二甲酸铅*	69011-06-9	0.005
VIII	38	碱式乙酸铅*	51404-69-4	0.005
VIII	39	双(十八烷基)二氧化三铅*	12578-12-0	0.005
VIII	40	C16-18-脂肪酸铅*	91031-62-8	0.005
VIII	41	四氟硼酸铅*	13814-96-5	0.005



Unless otherwise agreed in writing, this document is issued by the Company subject to its General Conditions of Service printed overleaf, available on request or accessible at <http://www.sgs.com/en/Terms-and-Conditions.aspx> and, for electronic format documents, subject to Terms and Conditions for Electronic Documents at <http://www.sgs.com/en/Terms-and-Conditions/Terms-e-Documents.aspx>. Attention is drawn to the limitation of liability, indemnification and jurisdiction issues defined therein. Any holder of this document is advised that information contained hereon reflects the Company's findings at the time of its intervention only and within the limits of Client's instructions, if any. The Company's sole responsibility is to its Client and this document does not exonerate parties to a transaction from exercising all their rights and obligations under the transaction documents. This document cannot be reproduced except in full, without prior written approval of the Company. Any unauthorized alteration, forgery or falsification of the content or appearance of this document is unlawful and offenders may be prosecuted to the fullest extent of the law. Unless otherwise stated the results shown in this test report refer only to the sample(s) tested.

Attention: To check the authenticity of testing /inspection report & certificate, please contact us at telephone: (86-755) 8307 1443, or email: CN.Doccheck@sgs.com

Room 101-901, Plant 4 & Room 101, Plant 2 & Room 101, Plant 3 & Room 301-501, Plant 3, Jianghao (Banian) Industrial Plant Area, No. 430, Jihua Road, Banian Community, Banian Street, Longgang District, Shenzhen, Guangdong, China 518129 www.sgs.com
 中国·广东·深圳市龙岗区坂田街道坂田社区吉华路430号江灏(坂田)工业厂区厂房4号101-901、2号101、3号101、3号301-501 邮编:518129 t(86-755) 25328888 sgs.china@sgs.com

检测报告
(SVHC)

编号: SZXEC2201042510

日期: 2022年04月29日 第9页,共12页

附录

所有检测的SVHC:

批次	序号	物质名称	CAS No.	RL (%)
VIII	42	氨基氰铅盐*	20837-86-9	0.005
VIII	43	硝酸铅*	10099-74-8	0.005
VIII	44	一氧化铅*	1317-36-8	0.005
VIII	45	碱式硫酸铅*	12036-76-9	0.005
VIII	46	四氧化三铅*	1314-41-6	0.005
VIII	47	钛酸铅*	12060-00-3	0.005
VIII	48	钛酸铅锆*	12626-81-2	0.005
VIII	49	硫酸四氧化五铅*	12065-90-6	0.005
VIII	50	铅锑黄*	8012-00-8	0.005
VIII	51	掺杂铅的硅酸钡*	68784-75-8	0.005
VIII	52	硅酸铅*	11120-22-2	0.005
VIII	53	二碱式亚硫酸铅*	62229-08-7	0.005
VIII	54	四乙基铅*	78-00-2	0.005
VIII	55	硫酸三氧化四铅*	12202-17-4	0.005
VIII	56	碱式碳酸铅*	1319-46-6	0.005
VIII	57	二碱式亚磷酸铅*	12141-20-7	0.005
IX	58	氧化镉*	1306-19-0	0.005
IX	59	镉	7440-43-9	0.005
X	60	硫化镉*	1306-23-6	0.005
X	61	乙酸铅*	301-04-2	0.005
XI	62	氯化镉*	10108-64-2	0.005



Unless otherwise agreed in writing, this document is issued by the Company subject to its General Conditions of Service printed overleaf, available on request or accessible at <http://www.sgs.com/en/Terms-and-Conditions.aspx> and, for electronic format documents, subject to Terms and Conditions for Electronic Documents at <http://www.sgs.com/en/Terms-and-Conditions/Terms-e-Document.aspx>. Attention is drawn to the limitation of liability, indemnification and jurisdiction issues defined therein. Any holder of this document is advised that information contained hereon reflects the Company's findings at the time of its intervention only and within the limits of Client's instructions, if any. The Company's sole responsibility is to its Client and this document does not exonerate parties to a transaction from exercising all their rights and obligations under the transaction documents. This document cannot be reproduced except in full, without prior written approval of the Company. Any unauthorized alteration, forgery or falsification of the content or appearance of this document is unlawful and offenders may be prosecuted to the fullest extent of the law. Unless otherwise stated the results shown in this test report refer only to the sample(s) tested.

Attention: To check the authenticity of testing /inspection report & certificate, please contact us at telephone: (86-755) 8307 1443, or email: CN.Doccheck@sgs.com

Room 101-901, Plant 4 & Room 101, Plant 2 & Room 101, Plant 3 & Room 301-501, Plant 3, Jianghao (Banian) Industrial Plant Area, No. 430, Jihua Road, Banian Community, Banian Street, Longgang District, Shenzhen, Guangdong, China 518129 www.sgs.com
中国·广东·深圳市龙岗区坂田街道坂田社区吉华路430号江灏(坂田)工业厂区厂房4号101-901、2号101、3号101、3号301-501 邮编:518129 t(86-755) 25328888 sgs.china@sgs.com

检测报告 (SVHC)

编号: SZXEC2201042510

日期: 2022年04月29日 第10页,共12页

附录

所有检测的SVHC:

批次	序号	物质名称	CAS No.	RL (%)
XI	63	水合过硼酸钠*	-	0.005
XI	64	过硼酸钠*	7632-04-4	0.005
XII	65	氟化镉*	7790-79-6	0.005
XII	66	硫酸镉*	10124-36-4, 31119-53-6	0.005
XVIII	67	硝酸镉*	10325-94-7	0.005
XVIII	68	碳酸镉*	513-78-0	0.005
XVIII	69	氢氧化镉*	21041-95-2	0.005
XIX	70	氧化硼钠*	12008-41-2	0.005
XIX	71	铅	7439-92-1	0.005
XXV	72	原硼酸钠盐*	13840-56-7	0.005



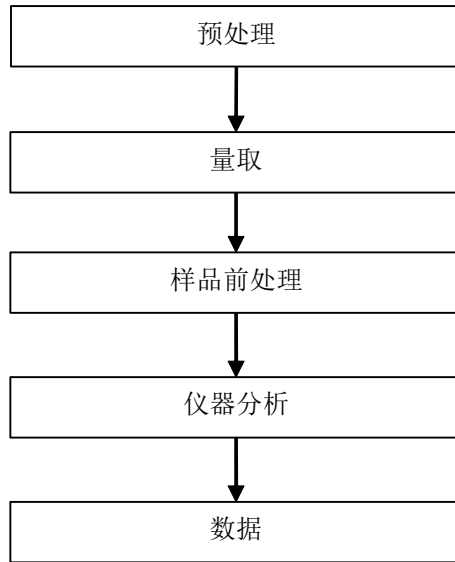
Unless otherwise agreed in writing, this document is issued by the Company subject to its General Conditions of Service printed overleaf, available on request or accessible at <http://www.sgs.com/en/Terms-and-Conditions.aspx> and, for electronic format documents, subject to Terms and Conditions for Electronic Documents at <http://www.sgs.com/en/Terms-and-Conditions/Terms-e-Documents.aspx>. Attention is drawn to the limitation of liability, indemnification and jurisdiction issues defined therein. Any holder of this document is advised that information contained hereon reflects the Company's findings at the time of its intervention only and within the limits of Client's instructions, if any. The Company's sole responsibility is to its Client and this document does not exonerate parties to a transaction from exercising all their rights and obligations under the transaction documents. This document cannot be reproduced except in full, without prior written approval of the Company. Any unauthorized alteration, forgery or falsification of the content or appearance of this document is unlawful and offenders may be prosecuted to the fullest extent of the law. Unless otherwise stated the results shown in this test report refer only to the sample(s) tested.

Attention: To check the authenticity of testing / inspection report & certificate, please contact us at telephone: (86-755) 8307 1443, or email: CN_Doccheck@sgs.com

Room 101-901, Plant 4 & Room 101, Plant 2 & Room 101, Plant 3 & Room 301-501, Plant 3, Jianghao (Banian) Industrial Plant Area, No. 430, Jihua Road, Banian Community, Banian Street, Longgang District, Shenzhen, Guangdong, China 518129 www.sgs.com
中国·广东·深圳市龙岗区坂田街道坂田社区吉华路430号江灏(坂田)工业厂区厂房4号101-901、2号101、3号101、3号301-501 邮编:518129 t:(86-755) 25328888 sgs.china@sgs.com

附件

SVHC 检测流程图

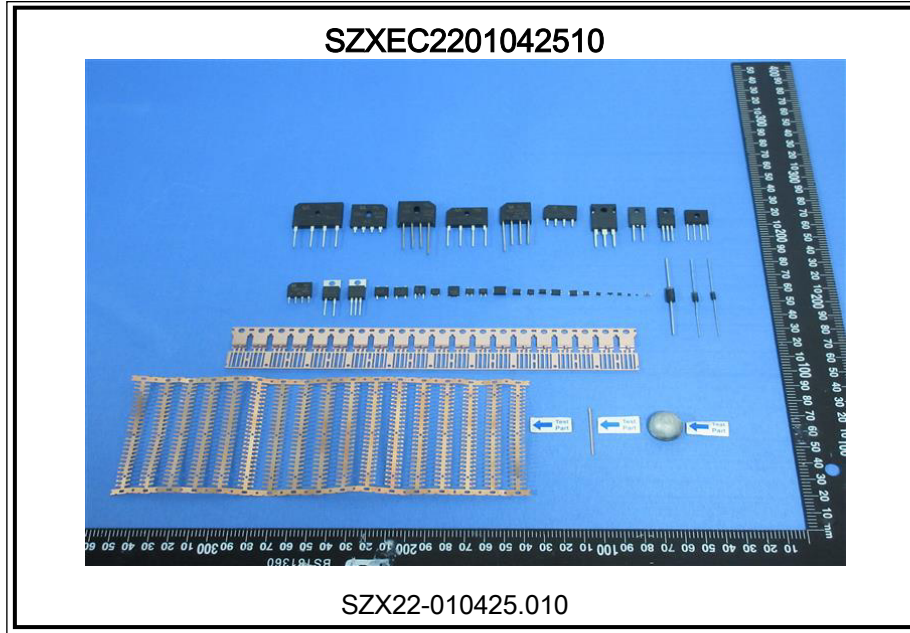


检测报告 (SVHC)

编号: SZXEC2201042510

日期: 2022年04月29日 第12页,共12页

样品照片:



此照片仅限于随SGS正本报告使用

*** 报告完 ***